

## Comms On The Pause

*Transportable, Ruggedized, Mobile*

Reliable tactical communications depend on infrastructure solutions that work even in the harshest environments. When your organization operates in places that are completely disconnected from the rest of the world, you need SATCOM hardware that can withstand everything nature and people throw at it.

## CopaSAT STORM V3

**Ku-band LEO SATCOM**



The CopaSAT STORM V3 is a fully integrated SATCOM terminal providing a hotspot that can utilize SD-WAN to select between cellular, Wi-Fi or satellite networks for optimization, failover or balancing.

The CopaSAT STORM V3 transportable, ruggedized, SATCOM solution. This CopaSAT exclusive configuration allows for multiple electronically steerable satellite antennas with embedded power and Cradle Point for ultimate high-performance Communications On The Pause.

The STORM V3 offers many additional options for maximum flexibility and usability.

### Potential Users & Applications

- Rapid Deployment Teams
- Defense
- Government
- Oil/Mining
- Vehicular
- Emergency Response Teams
- Law Enforcement

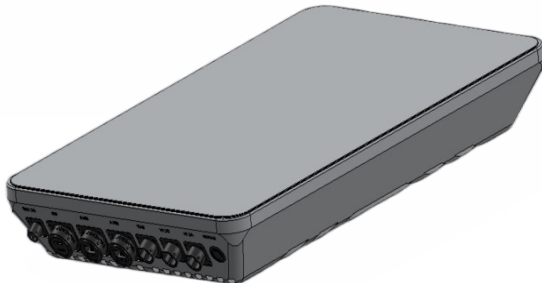




### Situational Awareness Redefined

- Global LEO roaming coverage.
- LEO Data rates up to 200Mbps Downlink/20Mbps uplink.
- Supports Communications On The Pause (COTP) requirements.
- Portable, ruggedized, reliable, one-button connectivity built to operate in the most extreme environments.
- No commissioning on LEO—simple access through subscription.
- Get access to infrastructure that automatically provisions and acquires the satellite with no pointing or time-consuming set up.
- Overcome challenges associated with requirements to remain connected even in the most remote locations.
- Fully integrated SATCOM terminal.
- Customized communication solutions designed to meet your requirements and specifications.
- One Person Carry, fits in a backpack, meets FAA airline overhead requirements and meets Mil STD overhead lift requirement.
- Uses SD-WAN to select between cellular, Wi-Fi or satellite networks for optimization, failover or balancing.
- Multiple power options.
- Plug and play.

### STORM V3 Lite Executive Kit, COTP



Specifications	
<b>Frequency Band</b>	
Transmit	14.0 GHz–14.50 GHz
Receive	10.70 GHz–12.70 GHz
<b>Composition</b>	
Integrated Router	Ethernet Switch/WiFi
Cradlepoint PepWave (Optional)	WiFi/LTE FIPS 140-2, AES 256K encryption
<b>Environmental &amp; Reliability</b>	
Latency-LEO	50ms
MIL-STD	Designed to meet MIL-STD-810G
Water Infiltration	Designed to meet IP68
Operating Temperature	-30°C to +55°C
<b>Physical</b>	
Dimensions	20 3/4" x 12 1/2" x 2 3/4"
Weight	< 20 lbs (9.1 Kg)
Mounting	Industry standard mounting holes or tripod
<b>Power</b>	
Input DC	12 VDC to 36 VDC
Input AC	100-240 VAC, 50/60 Hz
Solar Input	18–25 VDC, 10A max
BB-2590 Battery Input	24 VDC
Vehicle Power	12-28 VDC
Output	Optional 12 VDC output
USB Charging	USB/USB-C 30W
Power Consumption	50-75W (COTP)
<b>Interfaces</b>	
<ul style="list-style-type: none"> <li>• Two 10/100/1000 Mbps RJ 45 ports Ethernet ports</li> <li>• External SIM card access</li> <li>• Management (Smart Phone GUI, M&amp;C, Web UI/REST interfaceable)</li> </ul>	
<b>STORM V3 Options</b>	
<ul style="list-style-type: none"> <li>• LTE WAN capable / Wi-Fi access point</li> <li>• Fly-away transit case</li> <li>• Suction cup mounts</li> <li>• Magnetic mounts</li> <li>• Luggage rack/roof mount</li> </ul>	

[www.CopaSAT.com](http://www.CopaSAT.com)

727-325-1426

Sales@CopaSAT.com

8100 Bryan Dairy Rd., Suite 100

Seminole, FL 33777

company/CopaSAT

@copasat